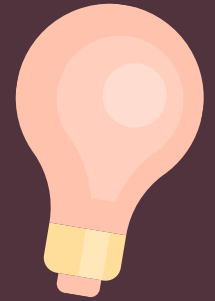


ENVIRONMENTAL INTERVENTIONS

TO ENSURE RESIDENT SAFETY IN BATHROOMS

LIGHTING



Ensure lighting in bathing area is appropriate.

Put a nightlight in the bathroom, and install automatic task lighting that turns on when the client enters the bathroom.



CONTRAST

Label the water faucets with tape, nail polish, or permanent marker: Red for the hot faucet, and blue for the cold faucet.

Cleansing items should not be too decorative or hard to recognize, and should contrast with surroundings.

Paint or outline in contrasting color tape the bathtub/shower, sink faucet/wall, and walls/floor.

SIGNAGE



Label soap, shampoo, towels, and other cleansing items, and laminate signs/cue cards.

Provide a reminder to turn off the water, and a sign that indicates the location of the sink faucet handle, as well as a sign above the faucet indicating the hot and cold handles.